

RFI GUIDELINES

Believe it or not, your cell phone gives off RFI, or radio frequency interference, at the same wavelength as Jupiter's radiation belts! They are much brighter and closer, too. Just like you can't see the stars when the Sun is out, radio telescopes cannot detect distant objects when an electronic device is on nearby.

For this reason, we ask you turn all electronic devices completely off (not just in airplane mode!) once you cross into the GBO RFI Restriction zone (marked in red on the Trail Guide). If you cannot turn off your device, please leave it in your vehicle.

This policy includes:

- » Cell phones and MP3 players
- » Bluetooth devices, including headphones, earbuds, and smart shoes
- » Smart watches and fitness trackers
- » Segways, motorized bikes, etc.

Medical devices, like pacemakers, hearing aids, and insulin pumps, do not have to be turned off.



(304) 456-2011

155 Observatory Road, P.O. Box 2
Green Bank, West Virginia 24944

Visit us at greenbankobservatory.org
or follow us on these social media platforms



GREEN BANK OBSERVATORY AND SCIENCE CENTER

SITE TRAIL MAP



This property is owned by the U.S. Government through the National Science Foundation and is therefore subject to all applicable laws related to government property. You must understand that by utilizing this site for trail use you indemnify the U.S Government and GBO/AUI from all liability, present or future claimed, and accept all risk for your activities.



SAFETY TIPS

- » Tell someone when to expect you back.
- » Travel in groups, and be aware of your surroundings.
- » Look up when the Sun will set, and plan to be finished before dark.
- » Know your abilities, and respect your body's limitations.
- » Always keep your pets on a leash.
- » Under no circumstances should you approach any wildlife. If you do not know how to deal with native bears or snakes, please ask the front desk for a safety brochure.
- » Stay away from these dangerous plants:

Water hemlock



Poison hemlock



White baneberry



Stinging nettle



Any mushrooms



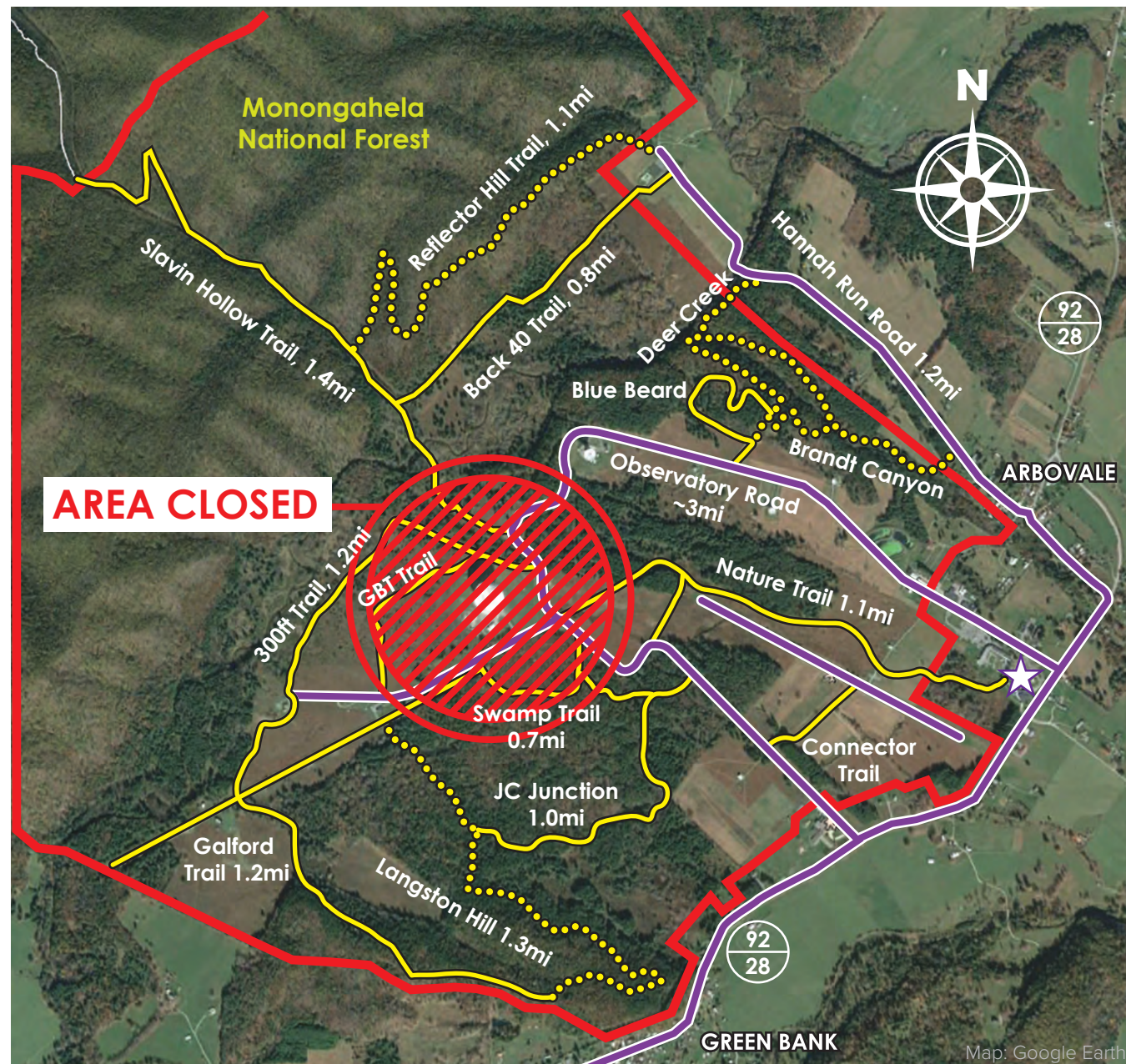
Poison oak



Poison ivy



Poison sumac



Yellow: Bike / Walking Track

Purple: Paved Road

Red: RFI Restriction Zone boundary

Dotted line: advanced/expert trails

Solid line: Beginner/intermediate trails

Star: Science Center. Potable Water, food, and phones available.

Please note the area around the GBT is temporarily closed for refurbishment work. Follow guidelines posted on roads and trails